

# DALHOUSIE UNIVERSITY'S RESEARCH DATA REPOSITORY

CAUL-CBUA RDM Forum

February 2018

Erin MacPherson

***The “what, why and how” of RDM and Dataverse at the Dalhousie Libraries***

# A LONG TIME AGO...

We didn't have a research data repository. And that was okay (...or was it?)

We knew that policies and procedures were being developed by the tri-agencies. We also knew that journals were implementing data policies.

Even though there were other repositories available – we chose to implement our own version of Dataverse because...

1. We could!
2. It is an established software used nationally and internationally and is specifically for research data.
3. It can be branded for Dalhousie and by individual users
4. It's a great community to work with, open to feedback and suggestions.

# WHAT IS DATAVERSE

- A free open source web application
- Developed by the Institute of Quantitative Social Science (IQSS) at Harvard University
- Designed specifically for research data
- Platform to contribute, share, preserve and find data.

# THE DAL DATAVERSE TEAM

## **The RDM Team (not just Dataverse) includes:**

- Sarah Stevenson – AUL Research Services
- Erin MacPherson – Research Data Management Librarian, MacRae Library
- Jason Flynn – Systems Administrator (Dataverse)
- And we also work with:
  - Margaret Vail & other ATS staff
  - Lee Wilson, Portage
  - Dalhousie Research Services
  - Senior Administrators within the Libraries and Dalhousie

## **We participate in:**

- CAUL Digital Preservation & Stewardship Group (*Sarah*)
- Portage - Dataverse North Working Group (Business Models Group) (*Erin, Jason*)
- Portage - Preservation Expert Group (*Michael*)

*...and we are growing!!!*

## SERVICES OFFERED BY THE DALHOUSIE LIBRARIES

Data management tools

DMP Assistant

Data repositories

[Dataverse \(Dal\)](#)

Information Resources / Workshops / etc

Video tutorials

RDM LibGuide

Bootcamp, OA week, training sessions

## HOW DID WE DETERMINE AND DEVELOP THESE SERVICES?

Project Charter for RDM @ Dal:

Charter comprised of Workplan and Task Lists

[Dataverse](#) implementation Task List

Collaboration & Networking

Communication with other institutions – in Canada & North America – also looked at practices in the UK, Europe and Australia

CASRAI connect – Portage launch in Oct 2015 (Sarah)

RDAP Summit – 2016 Sarah, 2017 Margaret

Dataverse Community Meeting – June 2017 Erin & Jason

# Research Data Management Project Charter

- Background
- Objectives & Scope
- Project Deliverables (& priorities)
- Stakeholders & Roles
- Governance & Oversight
- Work Breakdown
- Resources required & budget
- Constraints & dependencies
- Measurable success indicators and evaluation

## SECTION 1. PROJECT OVERVIEW

<b>Project Title</b>	Research Data Management Services at Dalhousie University		
<b>Brief description</b>	To support faculty and researchers in meeting the proposed data management requirements of the Canadian tri-agencies.		
<b>Project Lead</b>	Sarah Stevenson	Phone: 902-494-1325	Email: Sarah.Stevenson@dal.ca
<b>Faculty of Agriculture Lead</b>	Erin MacPherson	Phone: 902-893-3296	Email: Erin.MacPherson@dal.ca
<b>Date</b>	August 26 <sup>th</sup> , 2016		
<b>Version</b>	1.4		

## SECTION 2. PROJECT BACKGROUND

Development of research data management (RDM) services at Dalhousie University is necessary due to a number of emerging external and internal factors. External factors include a proposed national policy from funders NSERC, SSHRC and CIHR, which released a draft policy July 2015. The *Draft Tri-Agency Statement of Principles on Digital Data Management* will have a direct impact on impact faculty and researchers as they cover the agency RDM expectations and outline the responsibilities of researchers, research communities, institutions and funders in meeting these expectations (Government of Canada, 2015).

# Dataverse Implementation task-list

2017

Task	Priority	Status	Responsibility	% Complete	Notes
<i>Note: Major milestones are in red</i>					
Dataverse testing and configuration of v. 4.6	Normal	Deferred	Erin	100%	We decided to move to the latest version of Dataverse to have the best support for our researchers (ie. Handle vs. doi, etc)
DOI agreement signed with Datacite	High	Complete	Erin/Donna	100%	Done. Donna/Janice have the agreement, and Erin has a copy in her files also.
Dataverse terms of use approved by legal	High	In Progress	RDM Team/Donna	75%	Terms of use were reviewed by RDM team and Donna. An HTML version was prepared to be added to Dataverse and LibGuide. The terms of use are adapted from the Scholars Portal version. Donna has forwarded them to legal.
Install production version of Dataverse v.4.7	High	Complete	Jason (with input from Erin)	100%	Production version was installed once it was released on June 23, 2017 by IQSS Harvard.
TwoRavens installed and working	High	In Progress	Jason	75%	Installed but there are still some bugs.
Datacite information added to Dataverse	High	In Progress	Jason	50%	Test information in there, once Dataverse is seen by RDM team, Jason will put the "live" datacite information in there so real DOIs can be minted.
Terms of use added to Dataverse	High	In Progress	Jason	100%	These are marked in HTML ready to be added. They are uploaded in v.4.7.
Authentication	Normal	In Progress	Jason	50%	Jason - can you add the OAuth login similar to Harvard? Not sure that we can login with institutional. If not, is this something that can be added later? <a href="https://dataverse.harvard.edu/loginpage.xhtml;jsessionid=4f780afcf06730888afe589419ad?redirectPage=%2Fdataverse.xhtml">https://dataverse.harvard.edu/loginpage.xhtml;jsessionid=4f780afcf06730888afe589419ad?redirectPage=%2Fdataverse.xhtml</a> The username/email should be the main option.
Demo version of Dataverse available for users to demo	Normal	In Progress	Jason	0%	
<b>Customize v.4.7 (General information - see below):</b>	High	In Progress	Erin	50%	<i>(all of this can be changed at any time)</i>

Metrics

6 Downloads

Contact Share

Share, publish and get credit for your data. Find and cite research data from across all research fields.

Search this dataverse...

Find

Advanced Search

Datasets (3)

Files (31)

Dataverses (3)

### Dataverse Category

Researcher (2)

Research Project (1)

### Publication Date

2017 (5)

2018 (1)

### Author Name

Smit, Michael (2)

Kampen, Andrea (1)

1 to 6 of 6 Results

Sort

Replication Data for: Digital Tools and Techniques in Scholarship and Pedagogy in the Social Sciences and Humanities

Jan 3, 2018 - Mike Smit dataverse

Kampen, Andrea; Pearson, Maggie; Smit, Michael, 2018, "Replication Data for: Digital Tools and Techniques in Scholarship and Pedagogy in the Social Sciences and Humanities", doi:10.23685/1H9TOV, Dalhousie University Dataverse, V1, UNF:6:ls6ykBAvOw18T1YOD84Xlw==

Note: this dataset is replication data for the paper: Kampen, A., Pearson, M., & Smit, M. (2016). Digital Tools and Techniques in Scholarship and Pedagogy in the Social Sciences and Humanities. Technical Report, Dalhousie University. This data is about the adoption, diffusion and...

Emails from Canadian Federal Political Parties

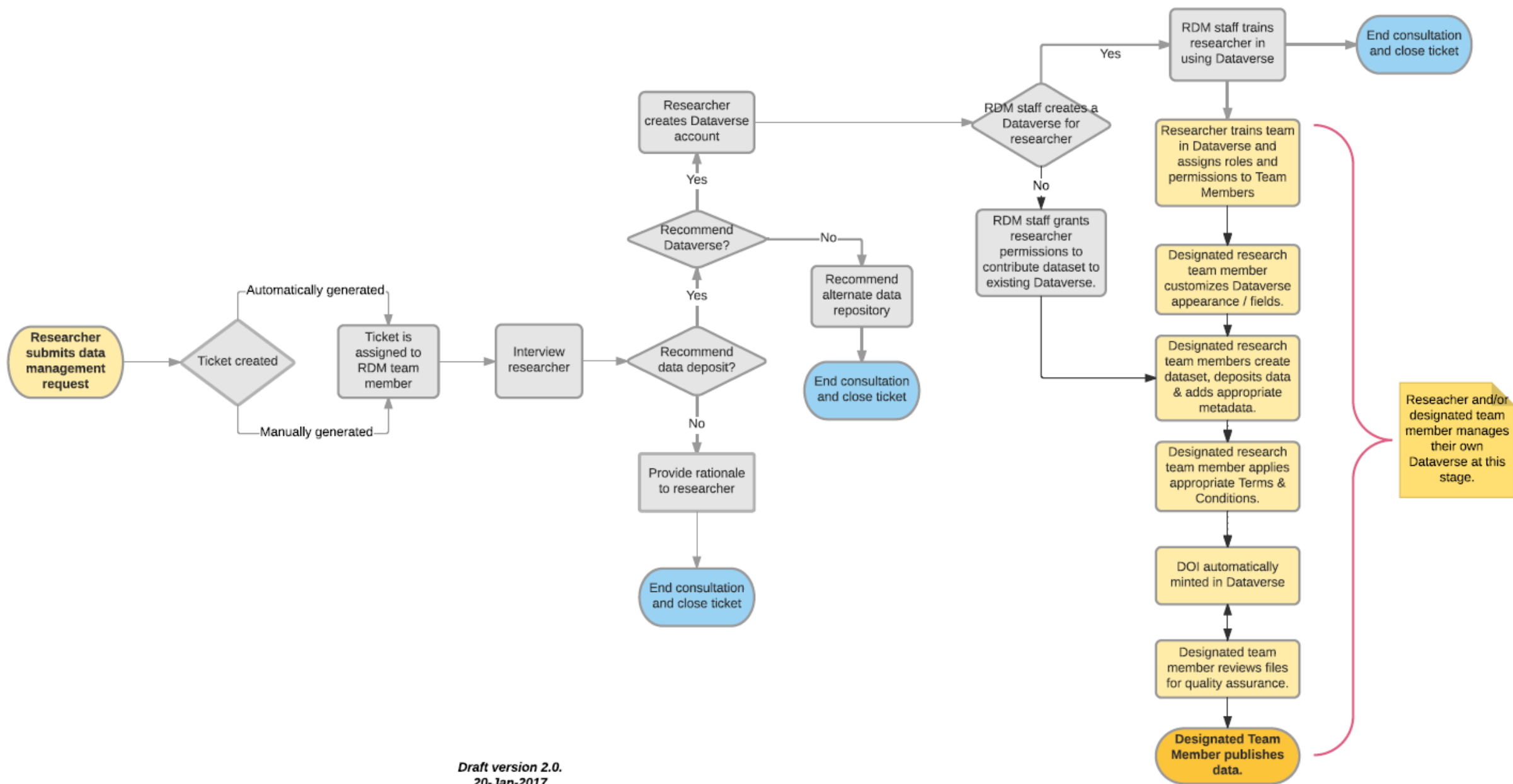
Dec 21, 2017 - Mike Smit dataverse

Smit, Michael, 2017, "Emails from Canadian Federal Political Parties", doi:10.23685/GZQ8Z2, Dalhousie University Dataverse, V1

Email received from the mailing lists of the four major Canadian political parties with a national presence: Conservative Party of Canada,



# Dataverse Workflow: From researcher request to data sharing and access



# DAL LIBRARIES' RDM TOOLKIT

- Training materials
  - Dataverse powerpoint & handout for training
  - DMP Assistant video
- Libguide
  - Links to all tools and repositories
  - Video Tutorial (DMP Assistant video tutorial, etc)
  - Finding other repositories (subject repositories)
  - Training materials (Portage & others):
    - RDM Dataguide
    - RDM for busy people

Dalhousie University Libraries / LibGuides / Research Data Management / Overview: Why Data Management?

## Research Data Management

This guide provides an overview of Research Data Management services and resources at Dalhousie University.

- Overview: Why Data Management?
- RDM Services at Dalhousie
- Write a Plan - DMP Assistant
- Find a Data Repository
- DataVerse
- Agency Guidelines & Journal Requirements
- RDM Training & Resources
- Contact

### Why create a data management plan?

#### How to avoid a data management nightmare

NYU Health Sciences Library  
Karen Hanson | Kevin Read | Alisa Surkis

How to avoid a data management nightmare, by Karen Hanson, Kevin Read & Alisa Surkis, New York University Health Sciences Library, Creative Commons Licence CC-BY (Attribution, reuse allowed)

This 4:40 minute video case study walks through what can go wrong without a plan and standards.

### How Dal Libraries can help you

The Dal Libraries can help you create your data management plan, store your working and completed data in preservation formats, describe your data (metadata), and find a suitable repository either in your discipline or at Dalhousie.

Our services are developing as this area evolves. See the Data Management at Dalhousie page for details.

### Video: Why Data Management Matters

#### Data Sharing and Manage...

## WHERE TO NEXT?

- Building & Expanding our Team (Liaison Librarians, Committee Terms of Reference, Roles, etc)
- Dataverse & RDM Promotion
- More Policies: Clear Collections Policy and Storage Policy (ie. storage space per individual, etc).
- Preservation Piece...
- Dataverse North?

**INTERESTED IN LEARNING  
MORE?**

Email us! (Sarah and/or Erin)

Or see us at APLA!